



AGRIFY™

PRECISION
EXTRACTION SOLUTIONS

 **Pure
Pressure**

 **LAB SOCIETY**

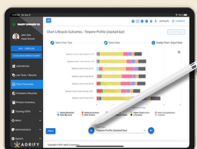
 **Cascade**

agrify.com | [@agrifycorp](https://twitter.com/agrifycorp)



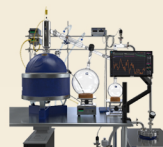
Your Path to Success

Software & Technology



Agrify Insights™

Precision monitoring & controls
Strain-specific grow plans via real-time analytics
Demand-based production planning



EliteLab

Datalogging, recipe & program creation
Human-Machine Interface (HMI) for processing systems
Repeatability & consistency for processing applications

Cultivation



Vertical Farming Units (VFUs)

Highly efficient multi-tier cultivation
Precise microclimate control



VFU Rapid Deployment Packages (RDP)

Pre-engineered packages for speed-to-market



Crop Protection & Facility Sanitization

Continuous UV-C air purification
Aqueous ozone surface sanitization

Extraction & Separation



Alcohol

Centrifugal systems: 15lb & 40lb



Hydrocarbon

Active recovery systems: 5lb, 10lb, 40lb
Passive recovery systems: 5lb, 10lb, 30lb
Diamond miners for crystallization
Solvent recovery pumps



Solventless

Turnkey hash washing systems
Auto & manual rosin presses
Dry sift trichome extractors



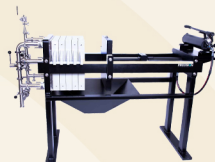
Post Processing

Freeze dryers: full-range of options & sizing
Solvent purging, crystallization, & isolation
Standalone & complete oven systems
Filter reactors

Filtration

Batch-Continuous

Multi-stage filter options
Cartridge-style options
Filter presses



[FPI Filter Press]

Winterization

Commercial Freezers

Chest, vertical, or walk-in options

Glass or Steel Jacketed Reactors

Array of sizes & configurations



[Cascade Glass Reactors]

Solvent Recovery



[20L HBX]

Batch

Rotary evaporators
Reactor systems



[ASE 100]

Continuous

Falling Film Evaporators (FFE)

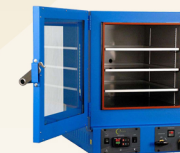
Degassing / Decarboxylation

Forced Air Ovens

Glass or Steel Jacketed
Reactors



[RV100]



[CVO-5]

Formulation & Product Creation



[Robotic Distillate Cartridge Filling Workstation]

Homogenizers

Mixers

Filling Systems



[20L G3X-R]

Complete Batch Systems

System sizes: 2L, 5L, 12L, 20L

Batch sizes: 100g-12kg per Shift

Comprehensive parameter & process
controls



[CannaBeast® 13]

Continuous Wiped/Thin Film Systems

Feed Rates: 1-2 LPH, 2-8 LPH, 10-20 LPH,
20-60 LPH

Single stage, 2-stage, or 3-stage
options

Full automation options

Modular wiped/thin film systems

Enclosures, Utilities & Ancillaries



[Precision Pod]

C1D1 & C1D2 Modular &
Standalone Enclosures

Ventilation Enclosures & Hoods

Pneumatic & Gear Drive Fluid Handling

Laboratory Glassware & Tools



[Huber Unistat 815]

Temperature Control Units

Vacuum Pumps

Analytical Instruments

Potency, terpenes, residual solvents, pesticides,
heavy metals, etc.

Services

Standard Operating
Procedures (SOPs)

Facility Design

Installation

Training

Repairs & Maintenance

Research & Development

Certifications

Consumables

Rosin Bags & Wash Liners

Gaskets & Seals

Fluids, Oils, & Lubricants

Spare Parts &
Maintenance Kits





**Agrify's Total Solution
is here for you.**

**Schedule your free
consultation today!**



agrify.com | @agrifycorp